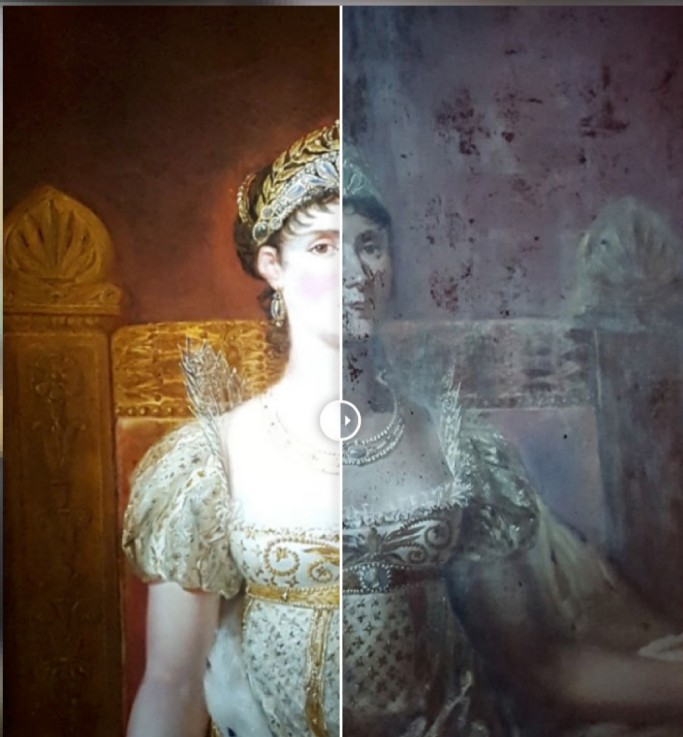


SURFACE INVESTIGATION

*For professional surface investigation of
art works & objects with UV-A and white light,
used for scanning and restauration purposes*



PDL POWERLIGHT

- *Highly effective most powerful inspection flashlight in high quality finish*
- *Original Cree LED's suited for 20.000 hours of use*
- *Inductive charging*





PDL POWERLIGHT

For professional surface investigation of art works & objects.

- Highly effective most powerful flashlight in HQ finish
- Scratchproof, according the highest standards
- Offers UV-A light or white light for the best possible surface inspection
- 2x rechargeable Panasonic battery

- Safety glasses optionally available in various colors
- Original Cree LED's suited for 20.000 hrs of use
- Durable design
- Inductive charging
- Round aesthetic finish

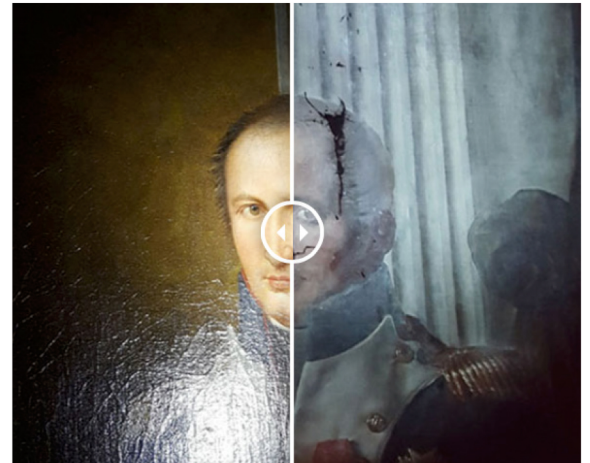
Technical specifications

Power LED's	5x 5 Watt UV-A 365 nm i.c.w. 1x 5 Watt white LED (300 Lumen)
Lifetime LED's	20.000 hours
Tested drop height	1,2 m
Material	Aluminum T6061, Premium Type III hard anodized abrasive finish
Color	Black
Weight	336 Gram (incl batteries)
Handling	Full grip, anti drop design
Filter	A special interference filter placed in front of the UV-A LED's block all visible light
Battery type	2x 18650 Li-ion rechargeable battery from Panasonic, 3400 mAh
Operational hours	3 hours*
Electrical charger	100-240 V ~ 50-60 Hz
Dimensions	219 x 52 mm (L x D (head))
IP rating	IP67
Switch	Metal executed
Standards	CE & RoHS compliant
Quality procedure	ISO 9001
Life span	Min. 5 years
Certificate	IEC report (IEC 60598-2-8) included
Manual	Included in English language
Guarantee	2 years on electrical performance

* Operational hours given are based on 2 hours use in white led position
and 1 hour use in UV position.



Note: Specifications and Design details are subject to change, without any notification



Intensity graph UV-A Light (365 nm)

